



# PARISH MATTERS

## SPRING EDITION

2024

[WWW.STMARGARETSELTHAM.ORG.AU](http://WWW.STMARGARETSELTHAM.ORG.AU)





Welcome to our first new Parish Matters quarterly edition - SPRING.

Our first edition will introduce you to all the activities, happenings and some interesting news at ST. MARGARETS in ELTHAM. Should you wish to contribute any articles or news, please email through to [communications@stmargaretseltham.org.au](mailto:communications@stmargaretseltham.org.au). Please keep the content +- 150 words and any photos.

## MESSAGE FROM OUR VICAR

What a difference a year makes!

This time ,12 months ago - I was saying goodbye to my household belongings as they were being boxed, labelled, stacked and packed into a transatlantic furniture removals van – which was then transported to Southampton docks and onto a vessel: CMA CGM FIGARO which would begin its 4-month journey across the seas to reach its final destination of Port Melbourne.

We are all on a journey aren't we? I know it's a cliché, but what I have learnt in this short time is that everyone at St Margarets Church has their own stories of how we came together. Some from different continents, some from different church denominations and traditions and some who have been baptised and even married in our beautiful Church. Our strength lies in this rich diversity along with our own unique and shared passions and interests making us a wonderful Church family and community to belong to and one for which my heart is gladdened that I have been called to serve and be alongside you.

I would like to thank you all for your welcome, care, prayers and hospitality. I have 'broken bread' with many of you in your own homes and as a result I have put on a dress size already – all I can say is thank goodness for cassock albs and chasubles as they hide a multiple of sins!!!

So, this is our first quarterly Parish Matters (PM) which we give thanks largely to Linda Mackenzie for coordinating and producing. However, sometimes as we journey forward with any change or something new – in our excitement or efforts we can often forget to honour the past which got us here. I would like to say a huge thank you on behalf of us all to Harry Watson and Sally Petty for producing this publication for many years as we transition from monthly PMs to quarterly.

Though Sally has stepped down from this ministry, Harry and Linda will be forging forward. Having said that if you feel drawn in being part of this team please speak with Harry or Linda.

Wishing you all every blessing

Peace and all good

Revd. Yvette



# St Margaret's Anglican Church Eltham



## ST. MARGARET'S LOGO

Originally designed as a letterhead it has become Margaret's Logo. It reflects the rolling hills that surround us characteristic of Eltham, Research and Montmorency. The waterways of the area - the Yarra and Plenty Rivers, Diamond Creek are symbolized in the foreground. The Copper Butterfly is unique to Eltham.

The rivers symbolize coming together, new life, baptism and rebirth - new directions.

Psalm 121: "I lift my eyes to the hills" is a daily occurrence living in this area. In scripture, mountains are associated with encountering God. Moses on Mount Sinai, Jesus - The Sermon on the Mount, and the mountain top experience of the Transfiguration,

The butterfly is a traditional symbol of resurrection - flying upwards it is also a symbol of moving on and hope. As an endangered species it also represents the fragility of our environment.

Details supplied by Diana Warrell



## PSALM 121

God the Help of Those

Who Seek Him

I will lift up my eyes to the hills

From whence comes my help?

My help comes from the Lord,

Who made Heaven and Earth.

## MUSIC SCHOLARSHIPS

This concert which has become an annual event was designed to raise funds for St. Margaret's Music Scholarship fund. Our young players still voluntarily participate even after they have completed their scholarship.

We offer two scholarships a year to pay for each student's music tuition fees. Involvement in this program gives them experience in accompaniment and the different styles of Christian music which is often the basis for modern music. Once scholarship holders have completed their scholarship the experience gained enables them to become contracted paid players for events /services at St. Margaret's. This is an income for them while they pursue their studies and interest in music.

The Melbourne Anglican Foundation encourages parishes to use the Melbourne Anglican Cultural Organization (MACRO) link as a tax-deductible vehicle by which you can support the scholarship program at St. Margaret's Eltham.

To donate use the website: [www.melbourneanglican.org.amaf-donation](http://www.melbourneanglican.org.amaf-donation) page

(MACRO site) or phone the office:0396534307 or do a direct debit to:

Melbourne Anglican Cultural Organization (MACO)

BSB:033-009 Account number: 325575 Ref. St. Margaret's Eltham Music Program.



## MEMORY CARE CAFÉ ELTHAM

The Memory Care Café is entering its third year of operation at St Margaret's Anglican Church, Eltham. The café opens in the Church Hall on the first and third Tuesday of each month and is growing in strength of numbers each year.

People living at home with dementia and their Carers, visit the café for entertainment and conversation in an inclusive environment, which provides an opportunity for social interaction and the sharing of experiences.

An activities officer holds supervised games for customers with dementia illnesses while the carers gather to discuss care strategies and network with one another while enjoying coffee or tea and snacks. The café is operated by volunteers with experience in dementia care, either as a professional who worked in the area or as the carer of a loved one. The café also hosts speakers from various organizations who provide Dementia Support Services. These sessions provide carers with valuable information and are enthusiastically received.

The café provides a relaxed and supportive environment for all its customers and welcomes all those who are living with cognitive decline and their Carers.

Sheila Cheary





## **THE DELIGHTS OF TAIZE 2024**

This year has allowed for the growth of St. Margaret's as a Church. We have been able to share the joy of song, prayer and company of many both in and around our Parish but also beyond. We are good at offering hospitality in the presence of the Holy Spirit, something we share with pride. The growth of Taize even on some really cold nights, has the ability to hold a space in which we offer through song, chant and blessings the reflective nature of our love of God. Initially to hold a silence for some time was for some challenging, but the Holy Spirit has guided many who are now more comfortable and find this time reassuring, something they can now use well for their own worship.

We have created our own St. Margaret's atmosphere with candles, light and meaningful fabrics to symbolize our First Nations Peoples in quiet respect. We look forward to your continued support and enjoyment in the remaining last Sundays in the month services, at 6:30 and 5:30 for a light meal.

My sincere thanks to all our musicians and those who spend time preparing a shared meal.

Helen Robertson

## **FAITH ISSUES**

The group meets every first and third Monday of the month from February to December. The group discuss a very wide range of issues which impact our Christian faith. Encouragement is provided for all to participate in discussion within a non-threatening and affirming environment. The group meets in the Church. Following the discussion, which begins at 7.30pm and concludes about 9pm, a light supper is served. Each discussion is stand-alone so attendees do not miss out on what may have gone before. All members are encouraged to suggest issues for discussion and encouragement is given for members to also lead a discussion. This is however not a requirement of being part of the group. Transport can be arranged from contacting the co-ordinator.

Geoff Sandy

## **MEN'S BREAKFAST**

This breakfast is held on the first Saturday of the month at 8:30 am in the Church Hall. A cooked breakfast is served for men of all ages (including sons and grandsons) to meet for a time of food, fellowship and friendship. A variety of breakfast foods are provided and food allergies are catered for. The group includes both informal discussions and formal presentations of topics of interest to men. The group provides a wonderful opportunity to deepen friendships.

The group is open to men of all ages and welcomes visitors.

Harry Watson

## **PUB LUNCH**

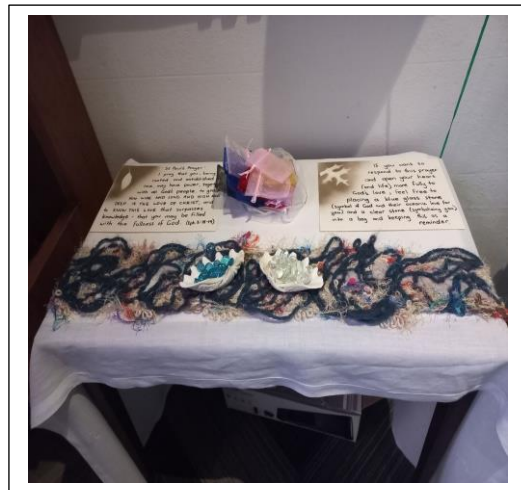
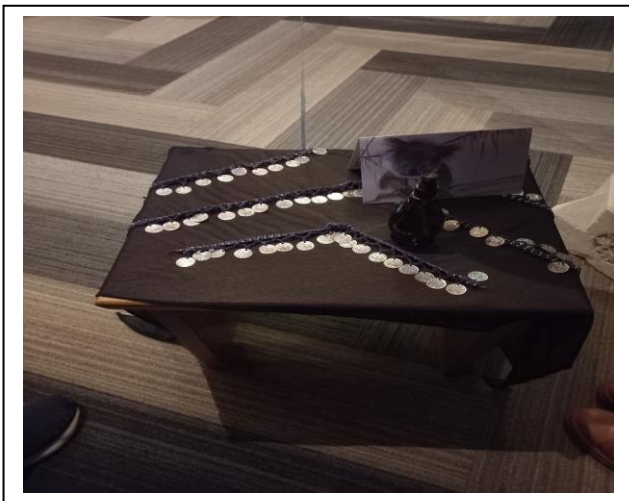
The parish Pub Lunch is on the first Sunday of the month at 12 noon. Parishioners from St Margaret's meet together each month for lunch at the Eltham Hotel. This provides an opportunity for many parishioners who attend different services to socialize together and in particular, provides a special time of fun and friendship for the parishioners at all stages of life.

Jenny Gillett



## FAITHFULL WOMEN

FaithFull Women is open to women of all faiths or none who are interested in exploring issues of life and faith. The 2024 program offers an opportunity to take time out from busy lives to experience a variety of spiritual practices that engage bodies, minds, and emotions. After most programs there is an opportunity to stay and share supper with others. This year the program has been run at St. Margaret's Anglican Church using its wonderful facilities and spaces for activities. The activities are largely focused on contemplative practices to explore spirituality. Different women from the parish and beyond take it in turns to lead the sessions and use art, books, poetry, film, music and other spiritual practices to explore how we come to know God more deeply. A number of women join us from outside the parish so this is a great HeartEdge approach to reaching the community beyond St Margarets. All women are welcome.



### Prevention of Violence against Women (PVAW) Committee

A deep cultural shift is needed to prevent violence against women. As the Church, we are compelled by Christ's love to challenge the attitudes, behaviours and structures that underpin violence, and create this shift. St Margarets Eltham has signed on to play our part by implementing a whole of church approach to responding to and preventing violence against women and children.

As part of this approach, the PVAW Sub-Committee has been set up to guide and implement a range of actions that work towards addressing violence against women. We are developing an Action Plan to identify what actions we can take going forward. Some ideas we are currently exploring include an art exhibition, a women's choir, attending a PVAW protest march (Diana Warrell) and donation of clothes to a women's refuge (thanks to Jen Gillett and Jennifer Constantine). Watch out for training and events on this topic and please help to support these as it takes the whole of our Church to make a difference.

Mandy Stevens



## THE LABYRINTH

The labyrinth at St. Margaret's is a replica of the medieval eleven circuit labyrinth laid on the floor of Chartres Cathedral that dates from the early 13<sup>th</sup> century. Walking a labyrinth is a rediscovery of a long-forgotten mystical tradition. The labyrinth only has one path – no tricks and no dead ends. You are invited to walk into the centre and there reflect or rest for a while then walk out.



## YARNING CIRCLE

A yarning circle is a collaborative and inclusive way of storytelling, sharing knowledge and solving problems that are central to Aboriginal customs.



## **DO JUSTICE**

Social Justice is a concept of fair and just relations between peoples, in terms of distribution of opportunity and social privilege.

“Learn to do good: seek justice, correct oppression, bring justice to the fatherless, and plead the widow’s cause,” writes Isaiah 1: v17.

Do Justice aims to publicize issues of injustice. We try to actively overcome injustices affecting vulnerable people. We do this by encouraging parishioners to write to politicians, to sign petitions, to contribute to food collections and to participate in the Palm Sunday march. Vulnerable people who have been helped include asylum seekers, people with disabilities, indigenous people, the LGBTQ, people in prison and children in care. We have been responsible for church groups at meetings acknowledging the Wurundjeri peoples as original owners of the land on which St. Margaret’s was founded.

Meetings are held monthly. Further contact details can be made through the Office.

David Tuke

## **ST. MARGARET’S MISSION GIVING**

Buried in the Parish financial reports is our contribution of \$43,682 for the current year to the Melbourne Diocese. The following extract is from their letter of thanks and indicates the purposes to which it is used - “On behalf of the Council of the Diocese, thank you for the parish's contributions. Your contributions support those services that are best offered centrally within the Diocese because they are highly specialised, as in the provision of theological education, property services, information technology support and the provision of legal and accounting advice. Further diocesan wide functions include those such as chaplaincy within public institutions, the organisation of the Episcopal Area’s and the provision of child safe and professional standards advice through the independent scheme company Kooyoora Ltd.” This is we think the largest amount that we have ever contributed. Annually the Parish also makes payments totalling \$16,000, targeted at various Anglican supported bodies. These have included. Anglicare, ABM, Brotherhood of St Laurence, Trinity College (for training of clergy) and Wontulp-Bi-Buya College (to equip Aboriginal and Torres Strait Islanders to become leaders in their church and community and the Bush Church and Society. We should be congratulated on being able to contribute the total of \$59,682 for these causes out of Parish funds including your continuing contribution in planned giving and open plate.

David Pryor

## UPCOMING EVENTS/SAVE THE DATES

8<sup>TH</sup> SEPTEMBER

St Margaret's Anglican Church Eitham

# SEPTEMBER MUSIC CONCERT

3PM SUNDAY 8TH 2024  
followed by refreshments



**FEATURING:**  
OPEN DOOR CHOIR  
HARP SOLO  
ORGAN SOLO  
PIANO SOLO & DUET

Funds raised will be used to support St.Margaret's Music Scholarship fund.

\$20 per person. Children Free  
To Book:  
Use the QR Code (active 12/8/24)  
or follow the link  
<https://www.trybooking.com/>  
Ph. 9439 9238. [www.stmargaretsemtham.org.au](http://www.stmargaretsemtham.org.au)

6<sup>TH</sup> OCTOBER

Pets Blessing 10.00 am in the Hall followed by morning tea for all.



**Bring your pet along to receive a blessing!**

**17<sup>TH</sup> NOVEMBER**

## **ST. MARGARET'S DAY CELEBRATIONS**

As 2024 continues to progress at a phenomenal speed, we are now looking to our special visit by our Bishop Brad Billings to celebrate St. Margaret's Day with us on November 17.



### **Bishop Bradly S. Billings**

Bishop Bradly Billings is the Assistant Bishop for the Oodthenong area of episcopal care. Brad was consecrated Bishop in 2016, and has served as an Assistant Bishop in the Diocese of Melbourne since then.

He will be Presiding at the service and then Blessing the renovated Dendy House following the 10 o'clock service. This will be followed by a light sit-down meal and there will be a charge of \$25. Please don't let the cost be an issue, arrangements can be made. We can also offer transport for anyone wishing to attend but unable to make their own way. This is a wonderful opportunity to share conversation with the Bishop and your fellow parishioners. Celebrations we are good at, let us make this one to remember.

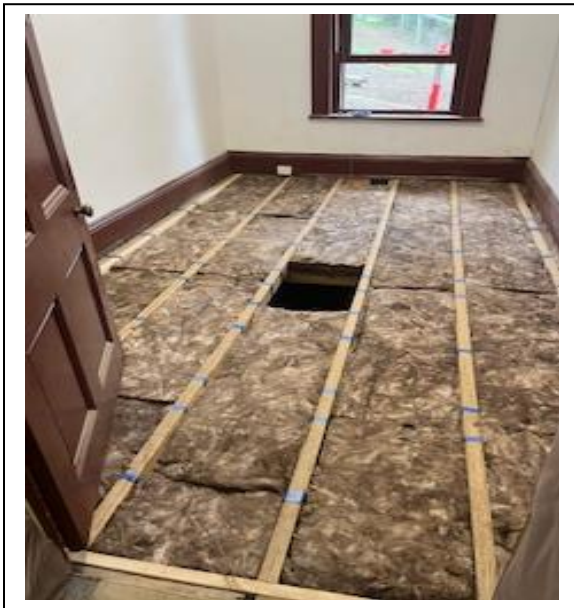


## DENDY HOUSE

Dendy House was constructed in 1870 and used as a Vicarage until the new one in John Street was built in 1958. Over time, Dendy House has been used for playgroups, meeting room, archives as well as clergy and parish offices.

For some time, we have been conscious of a bad smell in the building. When asking a plumber for help, he almost fell through the floor in the Vicars office. And the journey began. What started as a replacement for part of the floor in the office has moved to a major project.

Termites had eaten away the floorboards in the front (Vicars office) and the other two offices that side of the hall, along with some skirting boards. The termite inspector advised there were still live colonies and soil needed to be dug out to enable spraying. Although a new roof was installed in 1989, none of the downpipes had been attached to drainage and simply emptied onto the garden beside the ventilators. The garden had been built up allowing water to access under the floor via the ventilators.



With help from David Pryor and the rest of the Property Committee this has been a frustrating and demanding project. A plumber was engaged to install a drainage system along the side, even the downpipes outside the kitchen extension had not been connected. During this wet winter, water has poured through the foundations. Termites love water!

When the floors were pulled up, there were no stumps, the floor resting on a pile of bricks. We could have lost the Vicar through a hole in the floor! New floors have now been laid.

Our wonderful and dedicated builder Michael Nash has worked tirelessly on the job. Frustrating working on a heritage building, but he loves working on Dendy House. The consultant engineer has provided his services pro bono. Problem has been sorting out one problem then

finding another, not surprising for a building of this age. Water in the cellar under the meeting room reached knee height and needed to be pumped out and the whole building to be dried out.

So, where are we now?

- Gutters to be put on front porch to ensure water does not run down the side and into the building.
- Refurbishment of all windows so they can be opened and locked.
- New carpet throughout
- Paint skirtings and some walls
- Reinstall and service the air conditioners
- Clean
- Move Vicar and set up Parish Office.
- Set up archives
- Landscaping



My new work boots!

Sally Petty

## MEET OUR ADMIN OFFICER

Hello,

I'm Carolyn Jung, Admin Officer at St Margaret's. I started working here in 2021, after I saw a little note in my Church newsletter (Living Faith Church, Greensborough), looking for someone to help out for a few weeks in the leadup to Christmas. The rest you could say is history. It was one of those God prompts, and from the moment I arrived here it felt like coming home. I feel a real sense of calm and peace every time I walk through the door.

I love being able to provide admin support to the St Margaret's community, working behind the scenes to help things run smoothly. A large part of my role is helping prepare weekly services, and the weekly pew sheet, and providing support to Rev Yvette. As I only work part-time (16 hours a week), I really value that my hours are respected, and there is flexibility with working from home when family needs arise. (Huge thanks to Mary too, whenever something unexpected comes up.)

I live in South Morang with my husband Peter and our 3 children (they keep us on our toes!). I grew up on a dairy farm near Warrnambool, so a country girl at heart. I love gardening, and when I get a spare moment, that's where I will be.

It's the people that make up the heart of St Margaret's. There are so many faithful people, diligently serving God, and bringing their gifts together to be Church. There is a real sense of community here. I treasure the conversations I have had with folk whether on the phone or face to face. Just after I started at St Margaret's in 2021, my brother Tim died suddenly, and then 6 months later my dear Mum. Being at St Margaret's was such a blessing, in my grieving process, as I was supported and upheld in prayer. The weekly routine of coming in on a Monday, hearing about Sunday's services, and then onto our next week and all that unfolds provided me with solace.

God has given us all gifts, some we use, some remain to be discovered. So I encourage you to take a leap of faith if there is something God is calling you to do. I am so glad I responded to the little note in my Church newsletter those few years ago!





## **ST. MARGARET'S ANGLICAN CHURCH**

79-81 PITT STREET ELTHAM

OFFICE PHONE: 9439-9238

EMAIL: [parishoffice@stmargareteltham.org.au](mailto:parishoffice@stmargareteltham.org.au)

WEBSITE: [www.stmargareteltham.org.au](http://www.stmargareteltham.org.au)

### **WEDNESDAY SERVICE**

10.30 am Eucharist

### **SUNDAY SERVICES**

8 am & 10 am Eucharist

### **HALL HIRE**

Baptisms/Weddings/Funerals/Meetings & Activities

Contact: [communications@stmargareteltham.com](mailto:communications@stmargareteltham.com)

### **ACKNOWLEDGEMENT**

St. Margaret's Anglican Parish Eltham acknowledges the Wurundjeri people of the Kulin nation as the traditional custodians of the land on which we worship. We commit to working for reconciliation and justice for First Peoples. Diversity and inclusivity are important to us at St. Margaret's. Everyone is welcome here, regardless of race, gender, sexuality or ability.